



## 9 Queen Marys Drive

New Haw, Addlestone, KT15 3TS

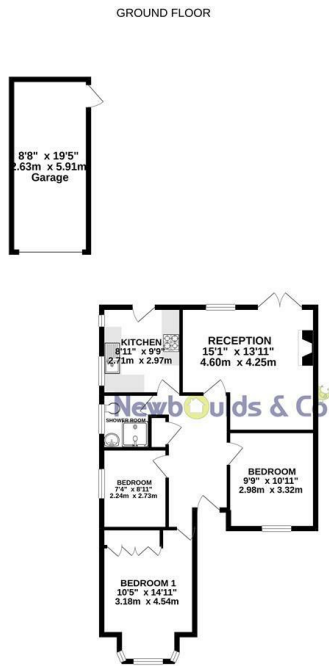
**Offers in excess of £435,000**

SALE AGREED BY NEWBOULDS & CO

### Viewing

Please contact our Shepperton - Sales Office on 01932232927 if you wish to arrange a viewing appointment for this property or require further information.

# Floor Plan

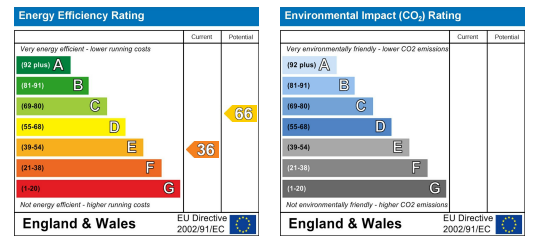


Whilst every attempt has been made to ensure the accuracy of the floorplan contained here, measurements of walls, windows, doors and any other items are approximate and no responsibility is taken for any error. Dimensions of this building, the plot, the location, perimeter, etc. are shown for use as only for prospective purchase. The services, systems and appliances shown have not been tested and no guarantee is given as to their availability or efficiency for the given. Made with MyMapa ©2021

# Area Map



# Energy Efficiency Graph



These particulars, whilst believed to be accurate are set out as a general outline only for guidance and do not constitute any part of an offer or contract. Intending purchasers should not rely on them as statements of representation of fact, but must satisfy themselves by inspection or otherwise as to their accuracy. No person in this firm's employment has the authority to make or give any representation or warranty in respect of the property.